

ON

 INParques  
Parques Empresariais de Famalicão

 Famalicão  
YOUR PLACE



# ***GEOSTRATEGIC POSITION***

## ***CONNECTION TO PORTUGAL, SPAIN AND EUROPE***

In the pulsation of its 134 thousand inhabitants is the driving force of an entrepreneurial and young county that is characterized by a vibrant and extremely innovative economy.

The county's geostrategic location, between the Oporto Metropolitan Area and Braga District, works as a road junction between the main penetration corridor in Europe (IP1 / IC5 / IP3 / A52) and the main axis of the Atlantic Front (IP1 / AP9) that links Porto, Braga and Guimarães, in the North of Portugal, and the Spanish regions of Galicia and A Coruña.





## ***INTERNATIONAL RAILWAY LINES***

### ***INTERNATIONAL ROAD LINES***

In the railway, it is also here that the international line Porto - Vigo and the line of Guimarães, in Lousado, connect and where the largest ferry terminal in dry port of the Iberian Peninsula is located.

The Francisco Sá Carneiro International Airport and the Maritime Cargo Ports of Leixões and Viana do Castelo are only 30 minutes away. Vigo Airport and the Port of Vigo, Spain, are 60 minutes away.

## ***INTERNATIONAL AIRPORTS***

### ***MARITIME CARGO PORTS***





# **VITALITY**

## **AND MULTISECTORAL DIVERSITY**

Famalicão is the third largest exporter county in Portugal and the qualification of its human resources one is one of its main references, having more than 14 thousand companies that generate a turnover of 5.2 billion euros.

The connection of the business ecosystem with research and development hubs is particularly successful.

With a strong, dynamic and diversified corporate DNA, Vila Nova de Famalicão is one of the most industrialized counties in Portugal, occupying a prominent position in the national economy and in exports.

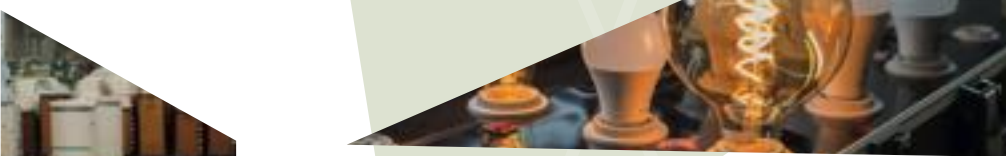
**TURNOVER OF**  
**5.2 BILLION EUROS**





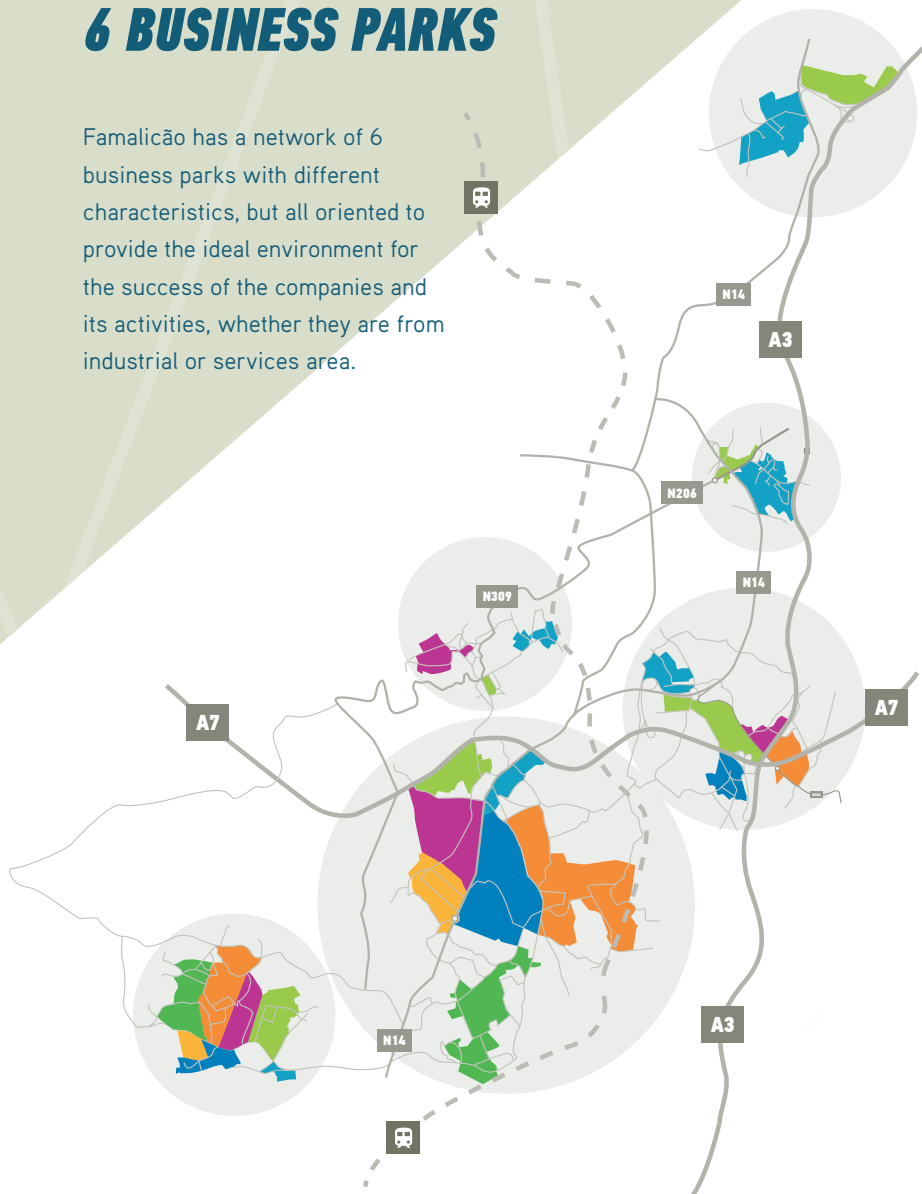
## ***INFRASTRUCTURES OF KNOWLEDGE, RESEARCH AND INNOVATION***

A vast range of knowledge, research and innovation infrastructures, from universities to technology centers, vocational schools and associations, that work together, support and challenge companies in sectors as diverse as textiles, food, electronics and metallurgy, civil construction, components for the automotive industry and value-added services such as technology and innovation, transport and distribution.



# 6 BUSINESS PARKS

Famalicão has a network of 6 business parks with different characteristics, but all oriented to provide the ideal environment for the success of the companies and its activities, whether they are from industrial or services area.



**TOTAL AREA**  
**900 ha**

**COMPANIES INSTALLED**  
**1,000**

FAMALICÃO



PORTUGAL

EUROPE

## **SUPPORT INFRASTRUCTURES**

- › Water supply
- Distribution of electricity LV, MV, HV
- › Natural gas
- › Telecommunications (fiber optics - 200mbps min)
- › Wastewater and rainwater drainage
- › Firefighting equipment
- › Waste collection services
- › Parking for heavy and light vehicles

## **SUPPORT SERVICES**

- › Restaurants and cafes
- › Green areas
- › Commercial spaces
- › Public transport
- › Health center / Hospital

**INParques**  
Parques Empresariais de Famalicão

# **SAM**

**BUSINESS PARK**



**TOTAL AREA**

**170 ha**

**NUMBER OF SECTORS**

**8**

## **LOCATION AND CONNECTIVITY**



Porto Airport (31 Km, 29 min)



Sea Port - Port of Leixões (37 Km, 35 min)



Famalicão rail freight terminal (3 Km, 5 min)

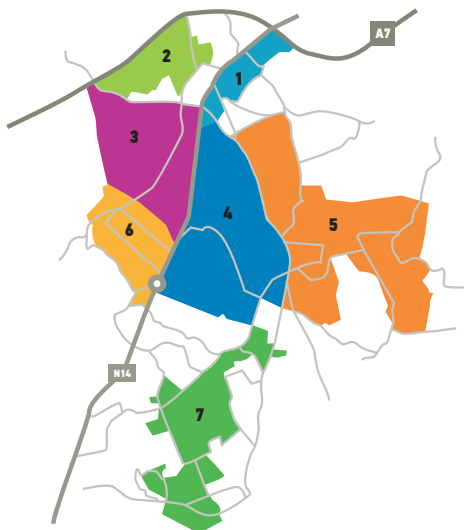


A3/A7 Highway (8 km, 11 min)



# **TERRA NEGRA**

## **BUSINESS PARK**



**TOTAL AREA**

**470 ha**

**NUMBER OF SECTORS**

**6**

### **LOCATION AND CONNECTIVITY**



Porto Airport (36 km, 25 min)



Sea Port - Port of Leixões (42 km, 32 min)



Famalicão rail freight terminal (situé dans le parc)



A3/A7 Highway (6 km, 7 min)

# **PELHE**

**BUSINESS PARK**



**TOTAL AREA**  
**100 ha**

**NUMBER OF SECTORS**  
**5**

## **LOCATION AND CONNECTIVITY**



Porto Airport (32 Km, 22 min)



Sea Port - Port of Leixões (38 km, 28 min)



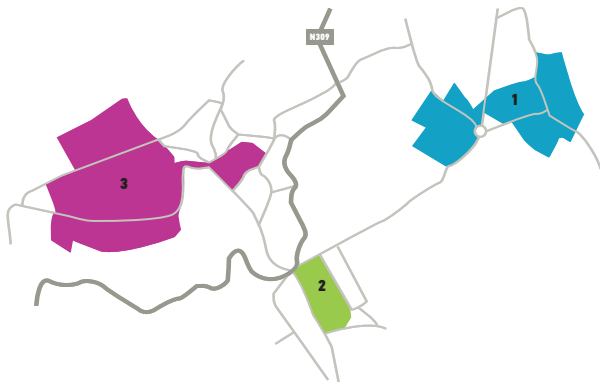
Famalicão rail freight terminal (6 km, 8 min)



A3/A7 Highway (7 km, 3 min)

# SOL

## BUSINESS PARK



**TOTAL AREA**

**40 ha**

**NUMBER OF SECTORS**

**3**

### LOCATION AND CONNECTIVITY



Porto Airport (33 km, 25 min)



Sea Port - Port of Leixões (39 km, 31 min)



Famalicão rail freight terminal (5 km, 7 min)



A3/A7 Highway (4 km, 6 min)

# **PEDRA LEITAL**

## **BUSINESS PARK**



**TOTAL AREA**

**40 ha**

**NUMBER OF SECTORS**

**2**

### **LOCATION AND CONNECTIVITY**



Porto Airport (35 km, 24 min)



Sea Port - Port of Leixões (41 km, 31 min)



Famalicão rail freight terminal (8 km, 9 min)



A3/A7 Highway (6 km, 5 min)

# **CURRELOS**

## **BUSINESS PARK**



**TOTAL AREA**

**76 ha**

**NUMBER OF SECTORS**

**2**

### **LOCATION AND CONNECTIVITY**



Porto Airport (38 km, 24 min)



Sea Port - Port of Leixões (44 km, 31 min)



Famalicão rail freight terminal (15 km, 10 min)



A3/A7 Highway (2 km, 3 min)



# **10 REASONS**

## **TO INVEST IN FAMALICÃO**

- › Strategic location in the North of Portugal
  - › Fast access by road and railway to Portugal, Spain and Europe
  - › Close to Airport and International Sea Port
  - › Strong business tradition
  - › Skilled employees
  - › Young and dynamic population
  - › Less bureaucracy in licensing procedures
  - › Municipal service for support and monitoring of companies
  - › Incentives for the installation and growth of enterprises
  - › 6 Business Areas with good facilities and regular investment
- 



## FAMALICÃO **MADE IN**

Famalicão Made IN is an initiative of the Municipality of Vila Nova de Famalicão to promote the economic development of the county. Based on the empowerment of a municipal context that facilitates entrepreneurship, it seeks to value and promote the entrepreneurial genetics of the municipality, capture new investments and help businessmen to promote and develop their entrepreneurial projects.

### ***APPRECIATION AND PROMOTION OF THE ENTREPRENEURIAL GENETICS***



THE  
**PLACE**

**INParques**  
Parques Empresariais de Famalicão

FOR YOUR  
**BUSINESS**



**Famalicão**  
CÂMARA MUNICIPAL

FAMALICÃO  
**MADEIN**

📍 Rua Camilo Castelo Branco, 108 | 4760-127 Vila Nova de Famalicão

☎ +351 252 320 930

📠 +351 252 323 751

🌐 [www.famalicaomadein.pt](http://www.famalicaomadein.pt)

✉ [madein@famalicao.pt](mailto:madein@famalicao.pt)

📘 [/famalicaomadein](https://www.facebook.com/famalicaomadein)

📷 [@famalicaomadein](https://www.instagram.com/famalicaomadein)

🐦 [@famalicaomadein](https://twitter.com/famalicaomadein)